



## PD96 Series

### SELF-LATCHING SLIDING DOOR LOCK

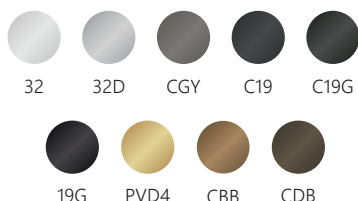
Commercial grade mechanical lock suited for a wide range of applications including but not limited to: Hospitality, Healthcare, Commercial, Class A Office, and high-end residential spaces.



#### CODE COMPLIANCE

- ANSI A117.1 Accessibility Code (ADA Compliant)
- Meets and exceeds ANSI/BHMA 156.36 Grade 1 Auxiliary Hardware standard
- UL1784 Standard for Safety Air Leakage test of Door Assemblies and Openings

#### FINISHES



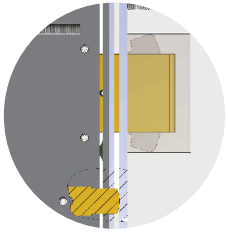
#### FEATURES

- Child-safe, self-latching, and tamper-resistant design: Built-in self-latching and self-locking mechanism secures the door automatically, with ADA-compliant trim
- Hygienic and durable: Stainless steel construction with optional CeraMax finishes stands up to hospital-grade cleaning in high-traffic pediatric areas
- Auto-locking with emergency egress: Ensures doors lock automatically when closed, while the inside lever always allows safe, single-action exit

#### SPECIFICATIONS

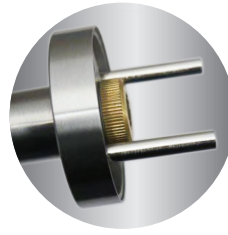
<b>Door Thickness</b>	1-3/4" (45mm) Standard 1-3/8" (35mm) Thin Door Kit 2" to 2-1/4" (50mm to 57mm); Thick Door Kit available
<b>Backset</b>	2-3/4" (70mm) 2-1/2" (63.5mm)
<b>Spindle Hub Size</b>	Lever: 8mm x 8mm square Thumbturn: 5mm x 5mm square
<b>Center-to-Center Distance</b>	Lever to Cylinder: 3-7/8" (98mm) Lever to Thumbturn: 2-11/16" (68mm)
<b>Cylinder</b>	Schlage C keyway 6 pin 1-1/4" mortise cylinder w/ 2 keys (standard) Optional SFIC and LFIC housing and cores available
<b>CAM</b>	CAM01-SCL Clover Cam
<b>Material</b>	Trim: Stainless Steel    Lockcase: Heavy gauge Steel Bolt: Brass and Stainless Steel    Cylinder: Solid Brass Faceplate/Strike: Stainless Steel

## FEATURE CALLOUTS



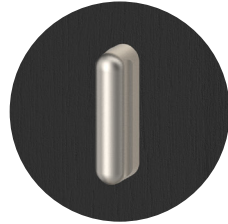
### SELF-LATCHING / SELF-LOCKING

- Self-latching: When sliding door is closed, deadbolt is automatically engaged into strike. Lever retracts deadbolt to unlatch.
- Self-locking: When sliding door is closed, deadbolt is automatically engaged into strike. Outside lever is in locked position, keeping door locked from outside. Key or inside thumbturn unlocks outside lever and unlocks deadbolt. Inside lever always allows emergency egress.



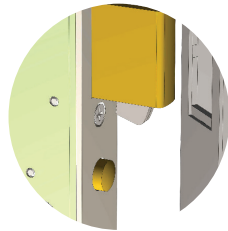
### X-SERIES

- Heavy-duty wire torsion spring.
- Cast stainless steel sub-rose with knurled brass nut for mechanical integrity and strength.



### ADA ACCESSIBILITY

- ADA compliant trim.



### ACTUATOR

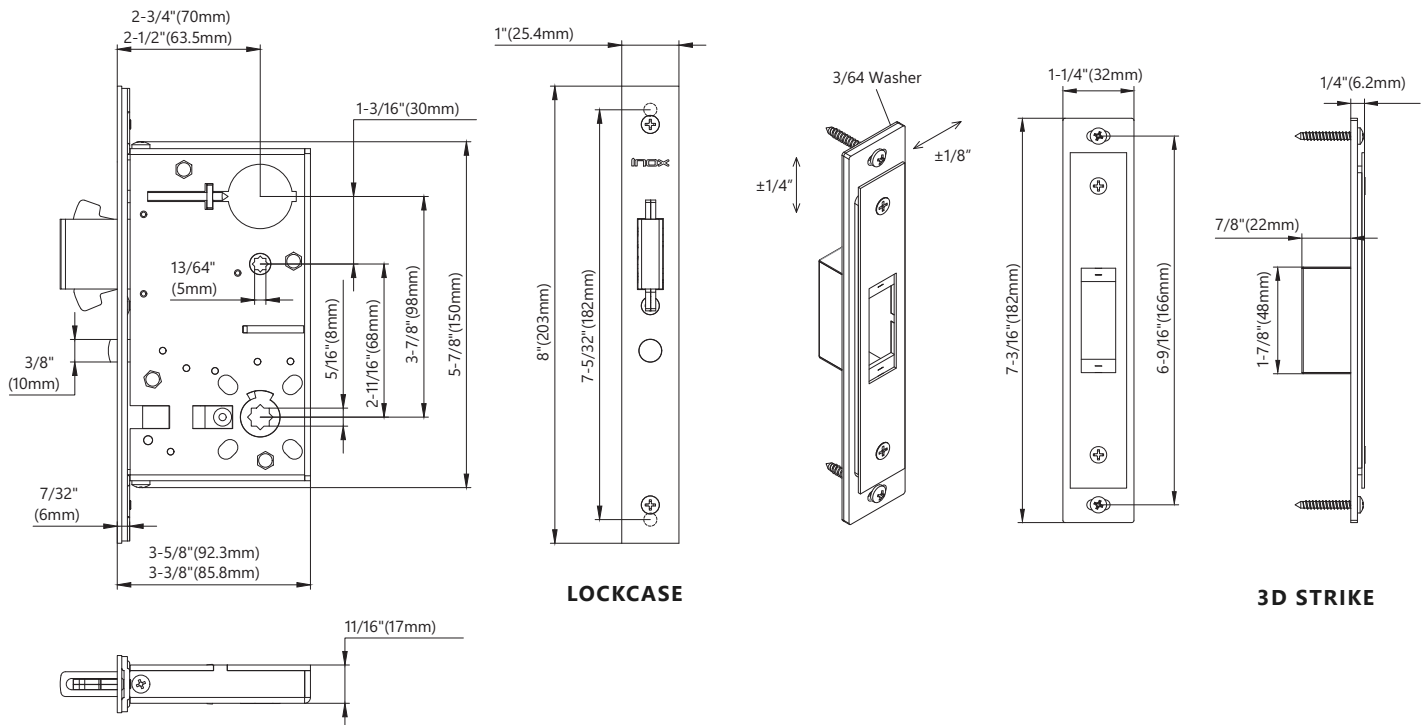
- The extended release button is built onto the faceplate of the lock.
- Once the door is closed, the release button is activated, which then triggers the deadbolt into the strike.



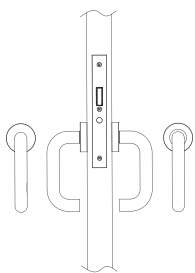
### EMERGENCY EGRESS

- Inside lever always allows for fast, single-motion exit—critical during medical emergencies or patient evacuations.

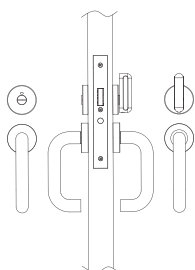
## DIMENSIONS



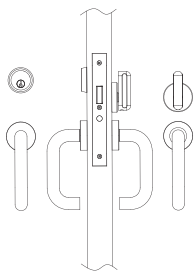
## FUNCTIONS

**PASSAGE 10**

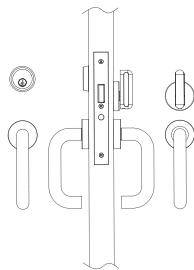
- Actuator button on faceplate contacts strike and automatically engages deadbolt when sliding door closes
- No thumbturn or keyed cylinder
- Outside and inside levers are active and can retract deadbolt

**PRIVACY WITH INDICATOR 40**

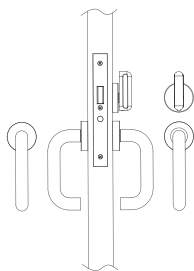
- Actuator button on faceplate contacts strike and automatically engages deadbolt when sliding door closes
- Outside lever is rigid when locked and cannot retract deadbolt
- Outside lever can retract deadbolt when unlocked
- Inside thumbturn can lock or unlock outside lever
- Outside coin turn emergency release can also unlock outside lever
- Operating inside lever to retract deadbolt simultaneously resets outside lever and inside thumbturn to unlocked position
- Inside lever can always retract deadbolt for emergency egress

**INNER ENTRY 50**

- Actuator button on faceplate contacts strike and automatically engages deadbolt when sliding door closes
- Outside lever locked or unlocked by key or inside thumbturn
- Outside lever is rigid when locked and cannot retract deadbolt
- Outside lever retracts deadbolt when unlocked
- Operating inside lever for egress simultaneously resets outside lever and inside thumbturn to unlocked position
- Inside lever can always retract deadbolt for emergency egress

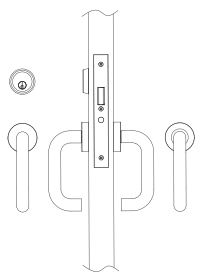
**ENTRANCE 53**

- Actuator button on faceplate contacts strike and automatically engages deadbolt when sliding door closes
- Outside lever locked or unlocked by key or inside thumbturn
- Outside lever is rigid when locked and cannot retract deadbolt
- Outside lever retracts deadbolt when unlocked
- Outside lever will remain in locked or unlocked position until user resets status with key or inside thumbturn
- Operating inside lever will not change the locked or unlocked status of the outside lever or inside thumbturn
- Inside lever can always retract deadbolt for emergency egress

**PATIO 60**

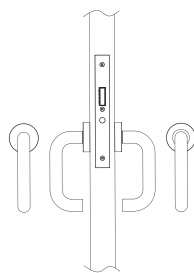
- Actuator button on faceplate contacts strike and automatically engages deadbolt when sliding door closes
- Outside lever is locked or unlocked by inside thumbturn
- Outside lever is rigid when locked and cannot retract deadbolt
- Outside lever can retract deadbolt when unlocked
- No keyed cylinder outside; door cannot be opened from outside when locked
- Operating inside lever to retract deadbolt simultaneously resets outside lever and inside thumbturn to unlocked position
- Inside lever can always retract deadbolt for emergency egress

## FUNCTIONS



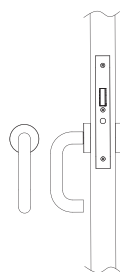
### CLASSROOM 70

- Actuator button on faceplate contacts strike and automatically engages deadbolt when sliding door closes
- Outside lever is locked or unlocked only by key
- Outside lever is rigid when locked and cannot retract deadbolt
- Outside lever retracts deadbolt when unlocked
- No thumbturn on inside
- Operating inside lever for egress will not change the locked or unlocked status of outside lever
- Inside lever can always retract deadbolt for emergency egress



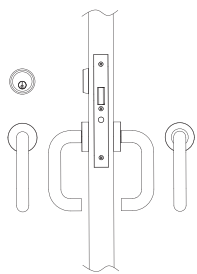
### EXIT 90

- Actuator button on faceplate contacts strike and automatically engages deadbolt when sliding door closes
- Outside lever is always rigid and locked and cannot retract deadbolt
- No cylinder outside, no thumbturn inside  
Inside lever can always retract deadbolt for emergency egress



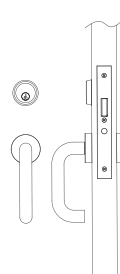
### COMMUNICATING 92

- Actuator button on faceplate contacts strike and automatically engages deadbolt when sliding door closes
- Inside Lever retracts deadbolt
- Blank rosette on outside



### STOREROOM 80

- Actuator button on faceplate contacts strike and automatically engages deadbolt when sliding door closes
- Outside lever is locked or unlocked only by key
- Outside lever is rigid when locked and cannot retract deadbolt
- Outside lever retracts deadbolt when unlocked
- Key cannot be removed from cylinder when outside lever is unlocked; key can only be removed when outside lever is in locked position. (Requires special CAM.)  
No thumbturn on inside  
Operating inside lever will not change locked status of outside lever  
Inside lever can always retract deadbolt for emergency egress

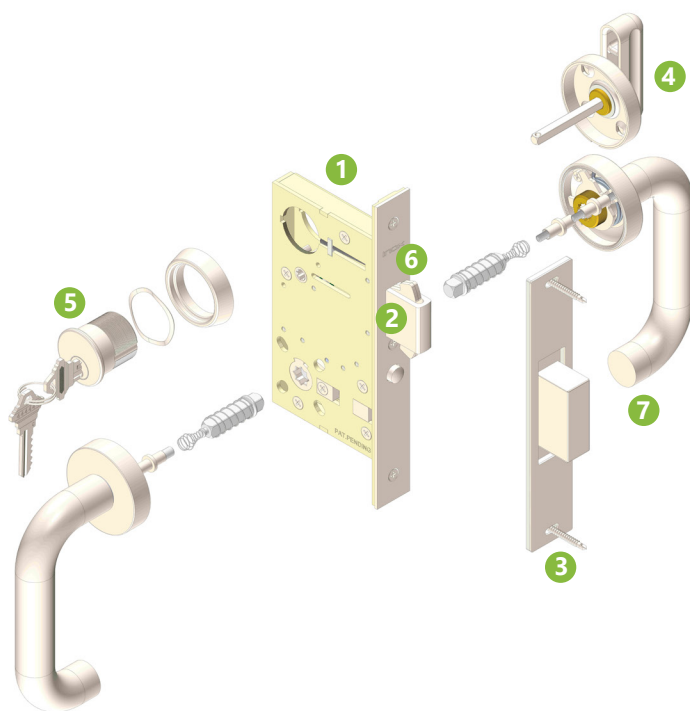


### SAFETY COMMUNICATING 95

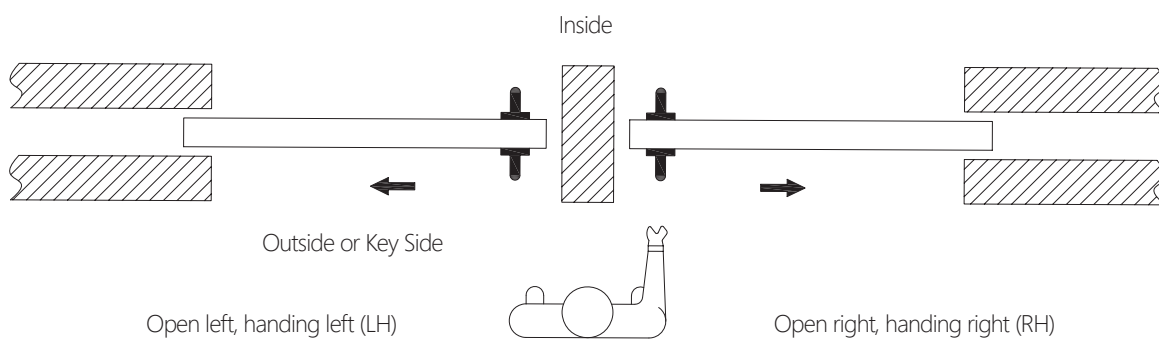
- Keyed function for connected rooms with security; only an authorized user may lock/unlock from the inside of the room, e.g. hotel staff
- Actuator button on faceplate contacts strike and automatically engages deadbolt when sliding door closes
- Inside lever is locked or unlocked by a key
- Inside lever can retract deadbolt when unlocked
- Inside lever is rigid when key locks the lever
- Blank rosette on outside

## COMPONENTS

- 1 PD9600 Series Lockcase
- 2 1" (25.4mm) heavy-duty brass bolt throw with self-retracting non-marring hooks
- 3 3D Adjustable Strike
  - Up and down adjustment is  $\pm 1/4"$
  - Left and right adjustment is  $\pm 1/8"$
  - Front and back adjustment is by adding  $\pm 3/64"$  spacers
- 4 ADA Compliant thumbturn
- 5 Schlage C keyway, 6 pin 1-1/4" mortise cylinder
- 6 Actuator to activate self-latching/self-locking feature
- 7 Heavy-duty stainless steel cast plate with choice of X Series lever design



## HANDING



## X-SERIES

- Handing refers to the direction the door slides open. Example: If the door slides to the left to open, it is a left-handed door.
- Determine door direction from the exterior or key side of the door when facing into the room.

## HOW TO ORDER MORTISE LOCKS FOR SLIDING DOORS

### HOW TO ORDER STANDARD LOCKSETS

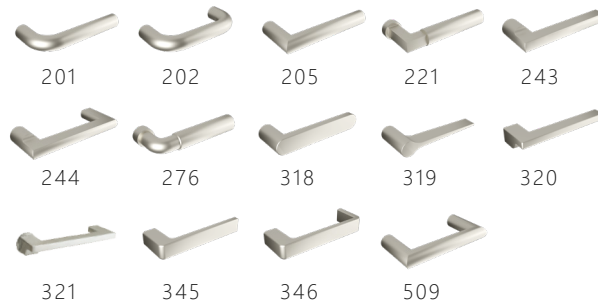
To order locksets with a non-standard specification, please describe the additional requirements in the same sequence as below.  
Please see price book for parts or additional service upcharge.

PLATE	LEVER	LOCK	FUNCTION	BACKSET	CYLINDER	THUMBTURN	FINISH	HANDING
RU	201	-PD96	53	A	-S6	-GR4	-32D	-LH
1	2	3	4	5	6	7	8	9

#### PLATE



#### LEVER



#### LOCK



#### FUNCTION

- 10 Passage
- 40 Privacy with Indicator
- 50 Inner Entry
- 53 Entrance
- 60 Patio
- 70 Classroom
- 80 Storeroom
- 90 Exit
- 92 Communicating
- 95 Security Communicating

#### 5 BACKSET

- Blank = 2-3/4"
- A = 2-1/2"

#### 6 CYLINDER AND HOUSING (INCLUDES COLLAR)

- LC = Less Cylinder
- Blank = Standard Mortise 1-1/4" Cylinder
- S6 = Small Format Interchangeable Cylinder (SFIC) Housing 1-1/4", 6-Pin, Less Core, L Clover Cam
- S7 = Small Format Interchangeable Cylinder (SFIC) Housing 1-3/8", 7-Pin, Less Core, L Clover Cam
- L6 = Large Format Interchangeable Cylinder (LFIC) Housing 1-1/2", 6-Pin, Less Core, L Clover Cam
- Order IC Cores and Thick Door Kits (TDKs) separately. (See Price Book)

#### 7 THUMBTURN



#### 8 FINISHES\* (STANDARD)

- 32D Satin Stainless Steel
- 32 Bright Stainless Steel
- 19G Graphite Black
- PVD4 Satin Brass
- Ceramax Graphite Black (C19G)
- Ceramax Flat Black (C19)
- Ceramax Stormy Grey (CGY)
- Ceramax Dark Bronze (CDB)
- Ceramax Burnt Bronze (CBB)

\*Please see Finish Solutions on INOX website for special order finishes.

#### 9 HANDING

- RH = Right Hand
- LH = Left Hand
- RHR = Right Hand Reverse
- LHR = Left Hand Reverse