

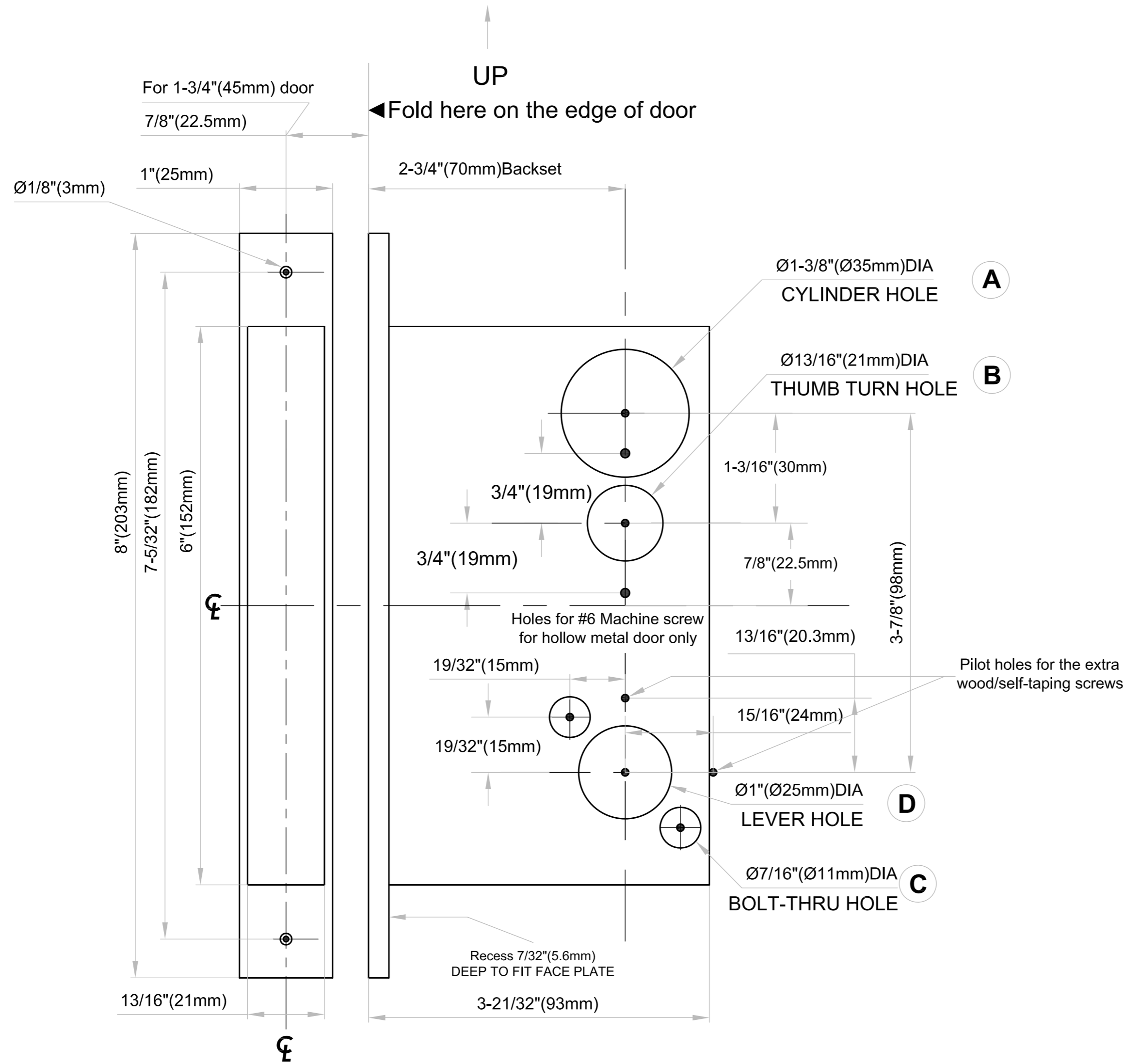
Template For PD96 (2-3/4" Backset) Self-latching / Self-locking Mortise Locks with XRA Lever Trim for Emergency Egress lock (3D Adjustable Strike)

Case Size: 3-21/32" x 6" x 11/16"(93mm x 152mm x 17mm)

Backset: 2-3/4"(70mm)

Lock Front: 1" x 8" x 7/32"(25.4mm x 203mm x 5.6mm)

Cylinder to Thumb Turn: 1-3/16"(30mm)



Door preparation using template supplied.

Please read the Installation Instruction Carefully before drilling any holes on the door.
Choose the correct holes to drill for the corresponding functions.

Lever by Lever	Item Ref.	Outside Holes				Inside Holes							
		A	B	C	D	A	B	C	D				
Passage	PD9610			●	●	●	●	●	●	●	●	●	●
Privacy	PD9640		●				●	●	●				
Office Entry	PD9650	●											
Entrance	PD9653	●											
Patio	PD9660			●	●	●	●	●	●	●	●	●	●
Classroom	PD9670												
Storeroom	PD9680												
Exit	PD9690												
Communicating	PD9692												
Security Communicating	PD9695												●

FOR OPPOSITE HAND
PLEASE SEE REVERSE SIDE

Dimensions do not provide allowances for door silencers,
weather stripping, sound proofing or other additions to door or door frames.

Match With Vertical Line Drawn On Door

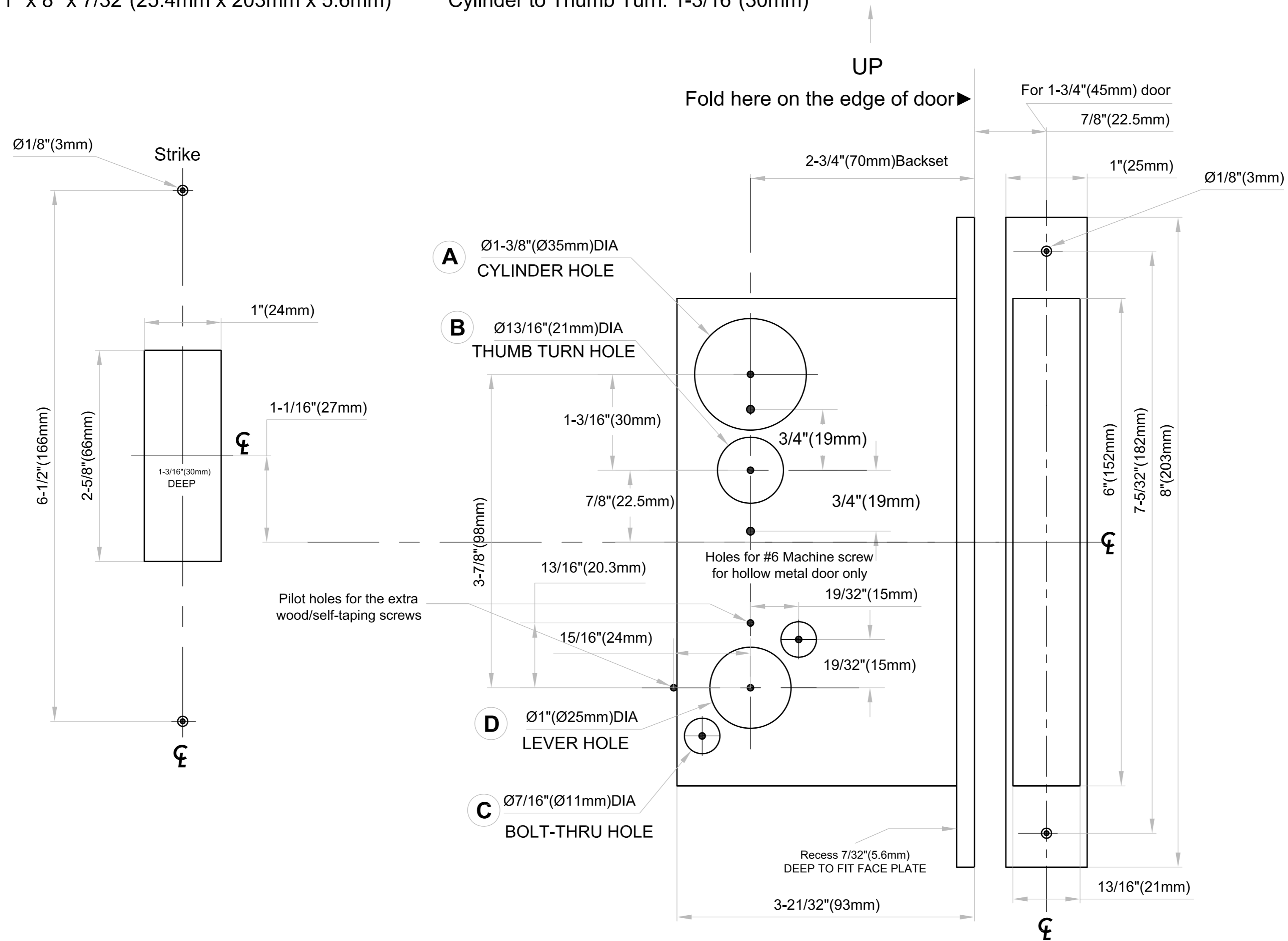
Template For PD96 (2-3/4" Backset) Self-latching / Self-locking Mortise Locks with XRA Lever Trim for Emergency Egress lock (3D Adjustable Strike)

Case Size: 3-21/32" x 6" x 11/16"(93mm x 152mm x 17mm)

Backset: 2-3/4"(70mm)

Lock Front: 1" x 8" x 7/32"(25.4mm x 203mm x 5.6mm)

Cylinder to Thumb Turn: 1-3/16"(30mm)



FOR OPPOSITE HAND
PLEASE SEE REVERSE SIDE

Dimensions do not provide allowances for door silencers,
weather stripping, sound proofing or other additions to door or door frames.

Match With Vertical Line Drawn On Door